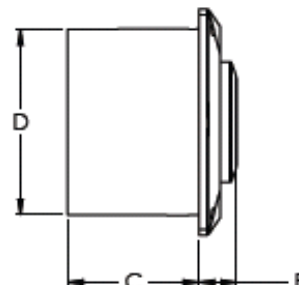
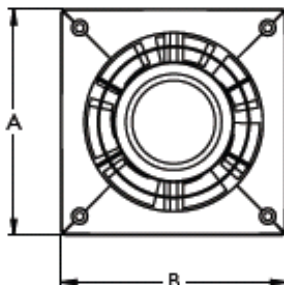


## Exhaust fans A6 series



### Product description

Exhaust fans for wall mounting of premises.

Construction	Manufactured from plastic Fan: axial Motor protection class: IPX4 Insulation class: class B
Installation	Mounting with all type round ducts: sheet metal, flexible aluminium, plastic or fabric. Mounting positions: vertical Location: indoors
Power supply	230V-50Hz single phase
Temperature range	- 25°C to + 40°C
Sizes	100, 125, 150 mm

DIMENSIONS [mm]					
Type	A	B	C	D	E
L100	120	120	70	98	20
L125	145	145	70	123	20
L150	170	170	70	148	20

## Exhaust fans A6 series

### Technical data

Type	Voltage [V-Hz]	Power [W]	IP	Speed [rpm]	Air flow [m3/h]	Noise level at 1m [dB(A)]	Temperature min/max [°C]	Weight [kg]
L100	230V-50Hz	15	IPX4	2550	75	32	-25/+40	0,35
L125	230V-50Hz	16	IPX4	2360	120	36	-25/+40	0,37
L150	230V-50Hz	20	IPX4	2100	190	40	-25/+40	0,47

